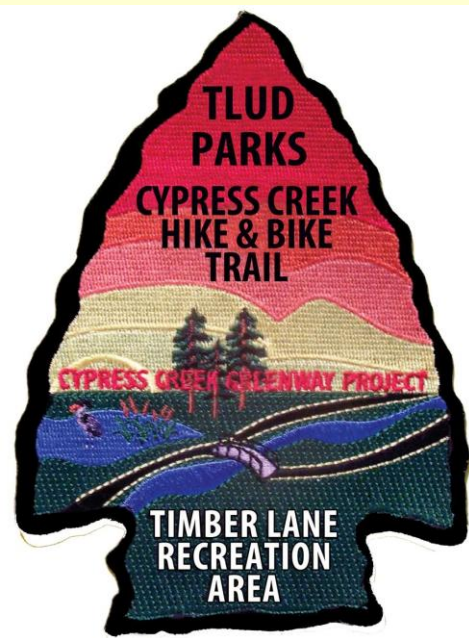


TIMBER LANE ULTIMATE MASTER PLAN 2014 rev



by
Bud Gessel

Table of Contents

- Adoption of the Plan -page 3
- Overall Plan Description –page 4-5
- Projects In-Process – page 6
- Public Input – page 7
- Accomplishments – page 8-10
- 10 Year Master Plan Timeline 2014-2024–page 11
- Updated Needs – Priorities – page 12
- Goals and Objectives –page 13
- Standards Used – page 14
- Maps – page 15-20
- Demographics – page 21-30
- Inventory of Existing Facilities – page 31
- Park Bonds – page 32
- Master Plan Links -page 33

Adoption of the Plan

- Timber Lane Board of Directors Meeting
June 10, 2014.
- Adopted this Master Plan for the district
- Adopted the priority list attached

Overall Plan Description

- District Area – 2107 acres Ultimate 2942 acres
- Population – Present 17,800 Ultimate 24,000
- Park Area – Present 282 acres Ultimate 357 acres
- Cypress Creek frontage / linear greenway – 4 miles
- UPRR - Hirschfield Property Acquisitions

Overall Plan Description

- The Timber Lane Utility District is a governmental body in the State of Texas and as one of its duties is to provide parks and recreation to the community under Chapter 49 and 54 of the Texas Water Code.
- This planning project started in July of 2005 – December 2005 with out initial contract with Texas A&M University (TAMU) – College of Architecture– Department of Landscape Architecture and Urban Planning to plan an interconnecting trail system to 3 parks. It was after this initial plan that the Timber Lane Utility District (TLUD) Board of Directors decided that an ultimate plan for our community was needed due to the rapid development occurring in the district for single family dwelling units and ultimate build out of our acreage. The ultimate build out plan required 2 additional projects by TAMU in January 2006-May 2006 for Union Pacific Railroad Park (UPRR) and August 2006 – December 2006 for Highland Glen—North Hills Park.
- The 3 planning activities together gave us the basis for the ‘ultimate master plan’ for our local parks, trails and greenway for the entire TLUD. There have been multiple benefits from doing this planning.
 1. Awareness to other groups Harris County Precinct 4 and Houston Parks Board (HPB) to future park land.
 2. Interconnectivity of the trail system to all subdivisions in the district and to adjacent districts (Memorial Hills, North Hills and Birnam Woods) and parks such as Mercer Arboretum.
 3. Prime example for the linear trails in Cypress Creek Greenway Project.
 4. Used as an model for a National Landscape Architecture Symposium on Urban Planning
 5. Transportation Improvement Project -Cypress Creek Hike and Bike Trail & Bridge Project for funding through HGAC managed by TxDOT.
 6. Signed 6 Interlocal Agreements with Harris County Flood Control District for trails through their property.

Park Projects In-Process

- **Transportation Improvement Project** – Engineering is complete, bid letting complete and construction on 2 bridges and 2.5 miles of paved trail to begin 8/1/2014 with completion 10/15/2015.
- **Cypress Creek Park Parking and Restrooms-** Engineering completed, bid letting complete and construction to begin 7/1/2014 and complete 9/15/2014.
- **Timber Lane Trail Head #8** – Engineering complete and bid letting scheduled for 7/1/2014
- **Under Hardy Toll/Union Pacific Bridge Crossing** – Engineering in-process.

PUBLIC INPUT SESSIONS

- October 4th 2013 - Cypress Creek Park Dedication – Public display of the Master Plan and input from the public 65 attendees
- March 22nd 2014 – Disc Golf Cleanup at Timber Lane Park – Public display and input from the public 25 attendees
- April 8th 2014 – North Hills HOA – Public display of the Master Plan and public input 100 attendees
- April 26th 2014- CITO Event at Sandpiper Park (Geocasche Cleanup Event) with 40 attendees – Public display of the Master Plan and input from the public
- May 8th Public Hearing on Master Plan 20 attendees
- June 10th Public Hearing on Master Plan, Flood Mitigation and Plan Adoption 18 attendees

ACCOMPLISHMENTS-PARKS

- Timber Lane Park –1994
- Spring Community Playground 2003
- Liberty Park 2004
- Cyress Creek Hike and Bike Trail 2008
- Park Bond Election 2007
- Sandpiper Park 2010
- Herman Little Park 2012
- Cypress Creek Park 2013
- TIP Bridge 2014-2015

TLUD Accomplishments

The program has grown as a result of the community involvement and interest generated by our Spring Community Playground project we completed in 2003 and the plans for complete development of the district in residential subdivisions.

1. Recognized by HGAC for “Best of the Best” Planning for our Timber Lane Master Park Plan in 2007 for a 13 county region
2. Internationally recognized as a “Case Study for Urban Planning” at the University of Massachusetts Association of Landscape Architect and Regional Planning Department Symposium in Boston in 2007
3. Recognized by HGAC for “Best Project Under \$500,000” in 2009 for a 13 county region for Cypress Creek Hike and Bike Trail Project
4. Recognized by HGAC for “Best Project Over \$500,000” in 2012 for a 13 county region for Herman Little Park
5. Completed 10.5 miles of natural surface and crushed granite trails in the district
6. Considered one of five regionally significant bike and pedestrian projects for the region by the HGAC Transportation Area Council
7. Awarded a \$4.9M Transportation Improvement Project in 2008 contract let 5/2014- 80/20 funded
8. Awarded TWO Federal Trails Grants in 2007 and 2009 –both completed 80/20 funded
9. Awarded TWO \$1M Outdoor Recreation Grants in 2008 and 2009 –both completed 50/50 funded
10. Entered into 6 Interlocal agreements with Harris County Flood Control District
11. Secured public & private donations of land and money totaling \$1.48M
12. Amassed green space in the district from under 20 acres in 2005 to more than 282 acres once these current projects are implemented.
13. Involved hundreds of volunteers in our parks and trails including Texas Master Naturalists, Student Conservation Association, Spring ISD Distinguished Service Graduate Program, GHORBA, Boy Scout Eagle Projects, Girl Scout Gold Award Projects and various community youth groups
14. Recognized by the Quality of Life Coalition Houston as a planning and implementation model for the region
15. Currently have \$7.4M in projects with the district share being \$1.6M
16. Voters approved \$6M in bond authorizations for parks to date issued \$2.9M
17. Ultimate Master Park Plan development for Timber Lane Utility District
18. Worked with Texas A&M with scholarships for over 100 students
19. Largest district project ever undertaken
20. Established strong relationships with Harris County Precinct 4, Harris County Flood Control, Houston Galveston Area Council, Cypress Creek Greenway, Houston Wilderness, Houston Parks Board, Mercer Arboretum, Bayou Land Conservancy, Greater Houston Partnership, Bayou Greenway Group, Texas Parks and Wildlife, Trust for Public Land, National Parks Service, and eight utility districts in park development

ACCOMPLISHMENTS

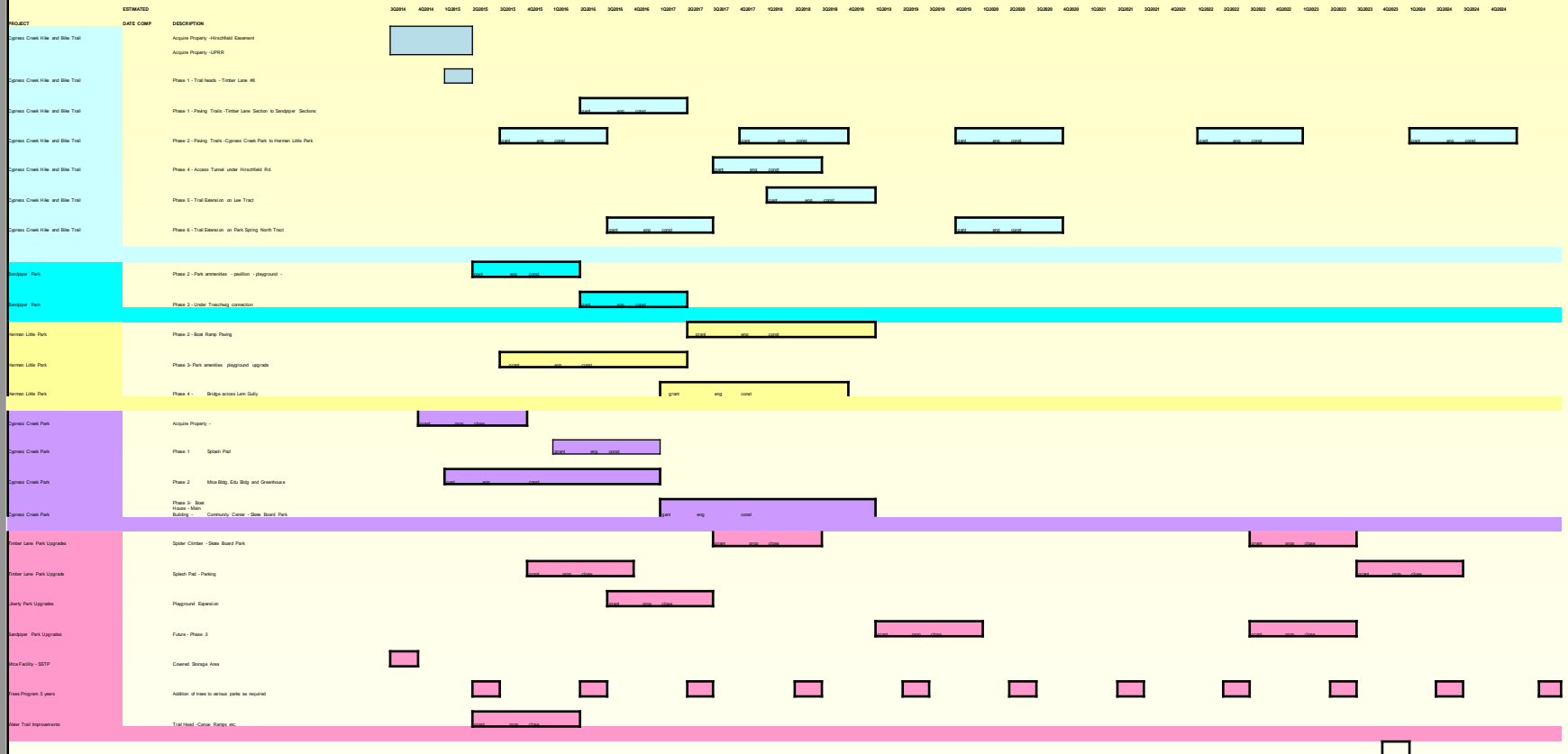
■ SPRING COMMUNITY PLAYGROUND PROJECT

- This playground was built by the Spring community for the betterment of the Spring community ultimately for the enjoyment by our children with community donations and community volunteer labor. It was built in 5 DAYS from January 29th to February 2nd 2003 with over 900 community volunteers. A large majority of the volunteers were parents, grandparents and friends of students from Hirsch, Smith and Jenkins Elementary Schools. We also had volunteers from Austin, San Antonio, Dallas, Houston, Kingwood, Conroe, Laredo, and Mexico.
- There were many community groups involved that supported this project both monetarily and with volunteer participation. We would like to thank those volunteer groups for the numerous hours of labor that went into the building of this magnificent facility. The following is a partial list of groups –
- Harris County Community Service Corp, Girl Scout Troop 3153, Boy Scout Troop 1565, Cub Scout Pack 65, Knights of Columbus Council #6557, Spring Volunteer Fire Department, St. James Youth Group, St. Mary's University San Antonio– Service Learning Center, Lion's Club – Spring, Spring High School Student Body, Spring High School Girls Basketball Team, Spring High School Volleyball Team, Dueitt Middle School Shop Classes, PTOs from Hirsch, Smith and Jenkins Elementary Schools, Twin Creeks Middle School Student Body and Dueitt Middle School Student Body, Lucent Technologies Engineering Group Volunteers, and Hays Utility Service Volunteers.
- The planning started in August 2001 by Timber Lane Utility District. The land for the playground was donated by Timber Lane Civic Association to Timber Lane Utility District to develop and maintain. Then Timber Lane Utility District hired an architect Leathers and Associates that specializes in community built playgrounds to design, develop, and manage the construction of this playground in January 2002. The Design Day event took place in May 2002 at Hirsch Elementary School with students from each grade level providing input into the design and ended that evening when the design was presented to the public at a parents meeting and the formation of the various committees to plan for the construction, funding, and volunteering began. The committees meet from May 2002 through December 2002. The next step involved several fundraisers, which took place from September 2002 through December 2002. The fundraisers included "Pennies For The Playground" at Hirsch, Smith and Jenkins Elementary School, Picket Fence Fund Raiser, and Corporate Sponsorships. We had many corporate sponsorships- Aurous Development, D.R.Horton Homes, Pulte Homes, Royce Homes, Union Pacific Railroad, Spring Pizza Buffet, JVI Sign Company, Ad-A-Print, Hays Utility Service Corporation, Van De Wiele Engineering Inc., Smith, Murdaugh, Little and Bonham, LLP, Lucent Technologies, Inc., Whites Construction Company, CET Limited, Ascrete, Deitz-Crain Homes, Dorsett Brother Concrete, Morrison Supply, Lowes, Home Depot, Jack Roach Ford, Bayside Printing Company, The Lemmon Family, Champion Rentals, DINA Industries, BFI, Makita Tools Inc., Ocanas Electric, Affordable Tents, Sholl-Forest Industries, United Rentals, SER Construction, Knights of Columbus, United Rentals, Grubbs Video, Pavestone and Hidden Valley Wrecker.
- The final step was the construction.
- It began with donated construction equipment including 2 bull dozers, 1 track hoe, 1 backhoe, 1 all-terrain forklift, 3 bob cats, 1 boom truck and 1 light stand. During the 5 days it took to build this playground we served 2400 meals to the workers with food donated by the children at the elementary schools, we installed 6 semi trucks full of ground cover-600 cubic yards, we spread 10 dump trucks full of crushed limestone for drainage underneath the playground, we installed 44,000 screws soaped by the children, we transported and installed 28,730 board feet of ACQ treated lumber, we transported and set 260 ACQ treated posts in the ground, we routed and sealed 114,920 linear feet of lumber, we drilled and installed 1320 lag screws, we covered and installed 490 feet of chain, we applied 70 gallons of sealer, and we hammered in 465 pounds of nails.
- PLEASE USE THIS FACILITY WITH CARE KNOWING IT WAS BUILT BY A CARING COMMUNITY FOR OUR CHILDREN AND GRAND CHILDREN WITH DONATIONS BY MANY OF OUR LOCAL BUSINESSES.
- Dedicated by Jerry Eversol, Precinct 4 Commissioner, Marsha Warkin, Hirsch Elementary Principal, and Dr. Hinahosa, SISD Superintendent on February 2nd 2003 5PM.

10 Year Master Plan Timeline

PARKS 10 YEAR TIMELINE

DRAFT UPDATE 5/29/2014



6/10/2014

Timber Lane Utility District
Ultimate Master Plan 2014

11

Needs –Priorities

Needs – Outdoor Priorities

1. Hiking and Biking Trails Property Acquisition
2. Splash Pads
3. Exercise Stations
4. Pedestrian Bridge
5. BMX Pump Track
6. Dog Park
7. Soccer Fields
8. Local Playgrounds
9. Picnic Areas / Pavilion
10. Connectivity to HC Parks
11. Under Bridge Crossing
12. Hiking and Biking Trails
13. Paved Trails

Needs – Indoor Priorities

1. Community Center
2. Education Building
3. Greenhouse
4. Maintenance Building

Goals & Objectives

- Preserve greenways throughout the community along Cypress Creek and part of Cypress Creek Greenway Project.
- Build a hike and bike trails interconnecting the community pocket parks.
- Addition of amenities to the existing parks and community building.
- Develop the interconnecting trails to HC parks in partnership with Harris County – Precinct 4 Parks Department.

Standards Used

- AASHTO
- ADA
- IMBA
- LOCAL STANDARDS
 1. Standardized restroom design for our parks by John A. McGee Architect, Houston, Texas
 2. Standardized pavilion design from Leathers Associates, Ithica, New York.
 3. Standardized sustainable trail design by S&STrails, Austin, Texas
- PARK PLANNING
 1. National Recreation and Parks, Park, Recreation and Open Space Guidelines.
 2. U.S. Department of Interior ,U.S. Fish and Wildlife Service , Classification of Wetlands and Deep Water Habitats of the United States. 1992
 3. Landscape Architectural Graphic Standards, L.J. Hopper 2007
 4. Landscape Detailing, Volume 4- Water, Michael Littlewood, 2001
 5. Planning and Urban Design Standards, Emina Sendich 2006
 6. Landscape Planning, Environmental Planning 4th Edition William Marsh 2005
 7. Landscape Restoration Handbook 2and Edition , Harker and Harker 1999
 8. Inventory and Monitoring of Wildlife Habitat, Allen Cooperrider, R. Boyd, and H. Sturart, 1986
 9. Landscape Plants for Texas and Environs, Michael Arnold, 2002
 10. Wildlife Management Techniques Manual. Sanford Shemnitz, 1988
 11. Timesaver Standards for Landscape Architecture, Charles Harris and Nicholas Dines , 1988
 12. Texas Wildscapes, Gardening for Wildlife, Noreen Damude and K. C. Bender 1999
 13. Native Texas Plants , Landscaping Region by Region, Sally Wasowski and Andy Wasowski,1997

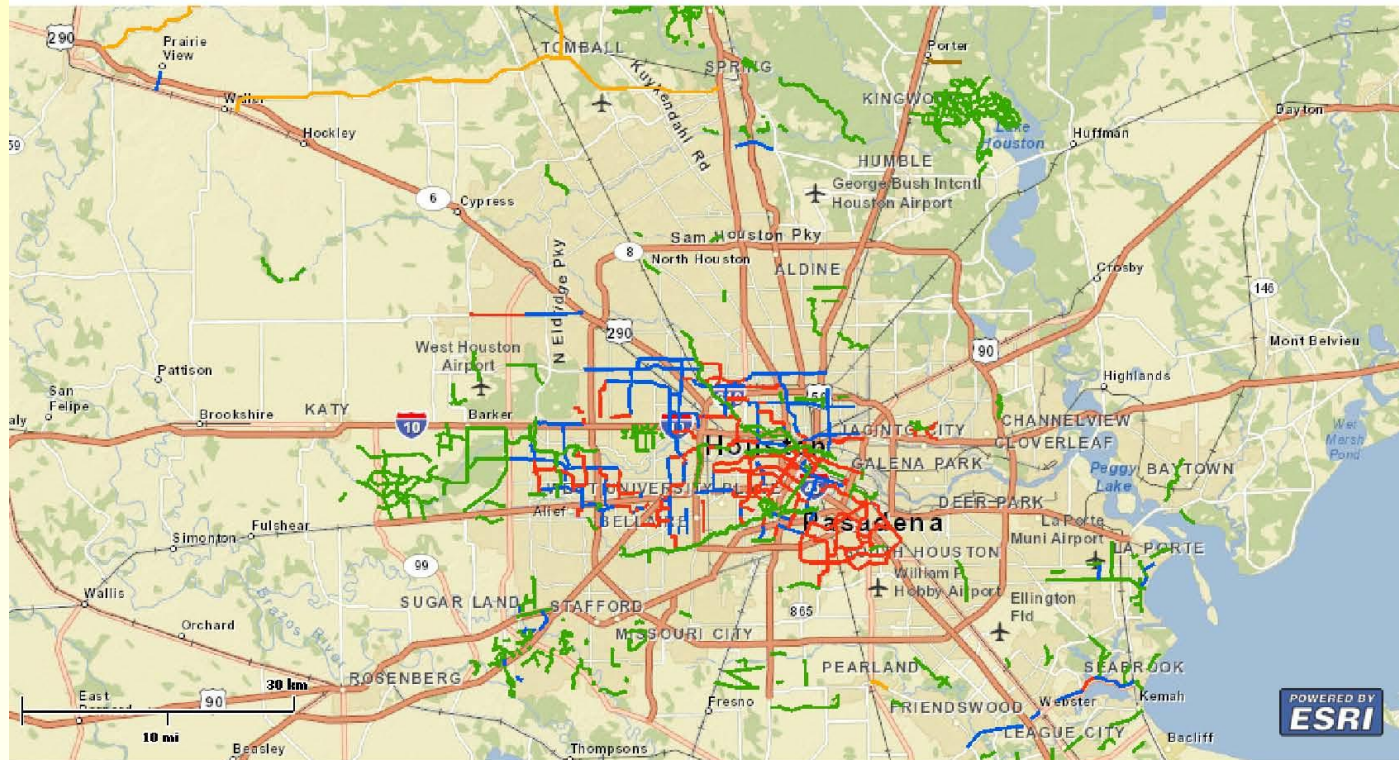
Maps

- Harris County Master Bike Plan Map
- Cypress Creek Greenway Project Map
- Timber Lane UD Boundary Aerial
- Timber Lane Parks Master Plan Map
- Houston Wilderness Map

Maps – H-GAC Bike Master Plan

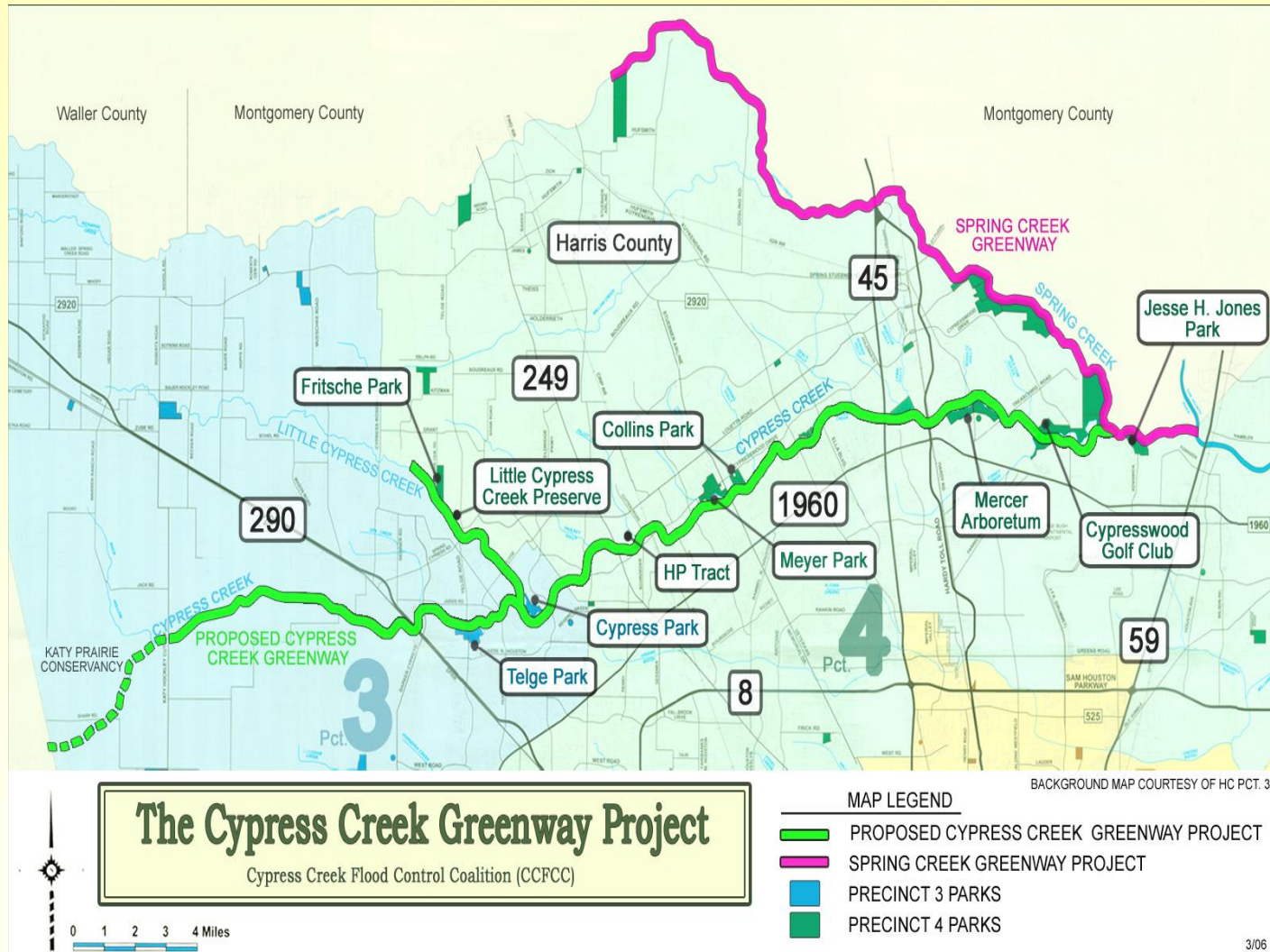
Bikeway Viewer

(type in your own subtitle here)



This decision support system is intended for general reference and planning purposes only. Mapping may not reflect on the ground conditions. The Houston-Galveston Area Council makes no further claims as to the accuracy or reliability of the data, and neither assumes, nor will accept liability for their use. Printed on Wed Mar 5 2014 09:05:30 AM.

Maps -Cypress Creek Greenway Project



Maps – Timber Lane UD Aerial 2013

1



Timber Lane Utility District

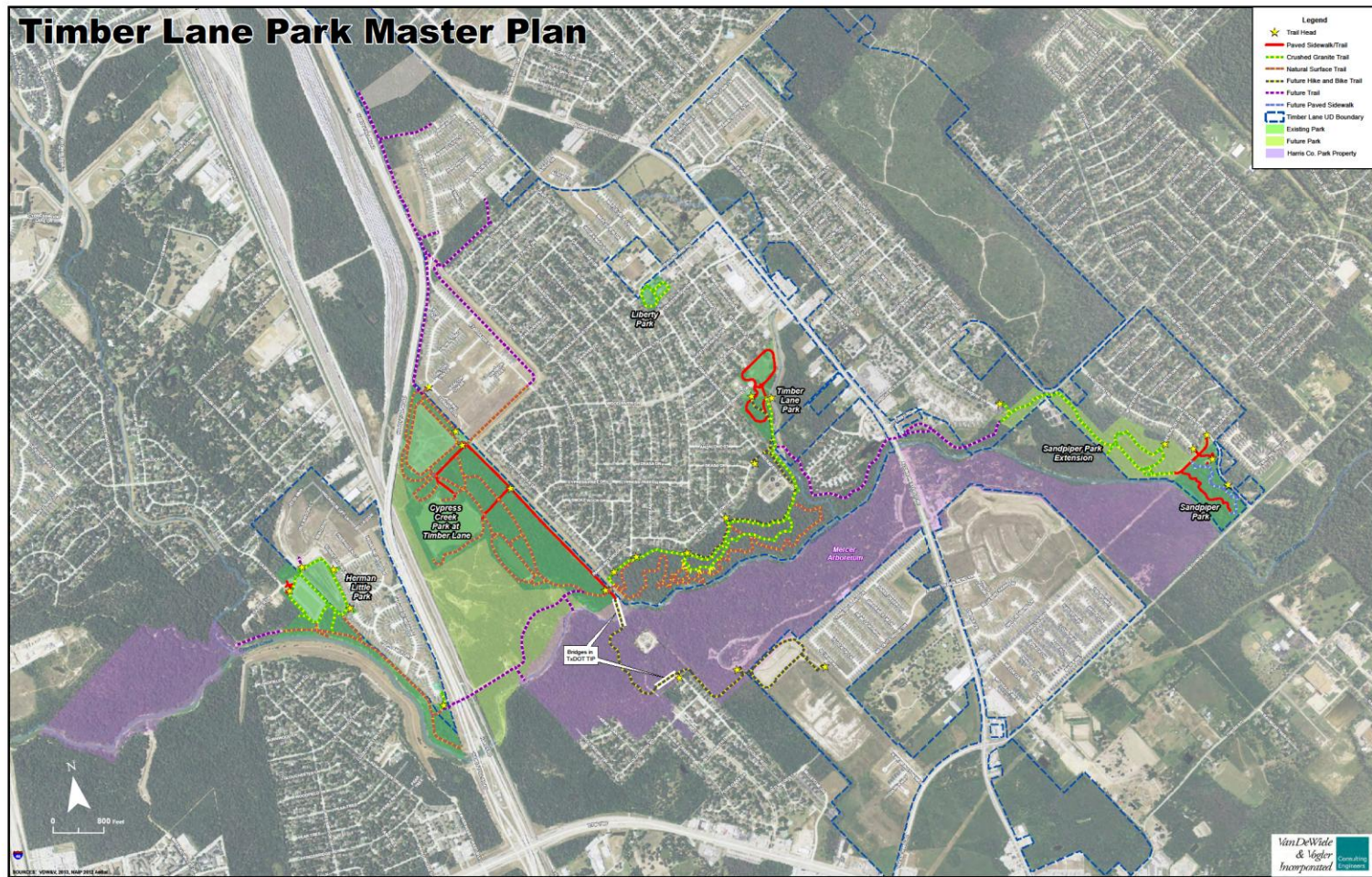
Legend

 Timber Lane UD Boundary

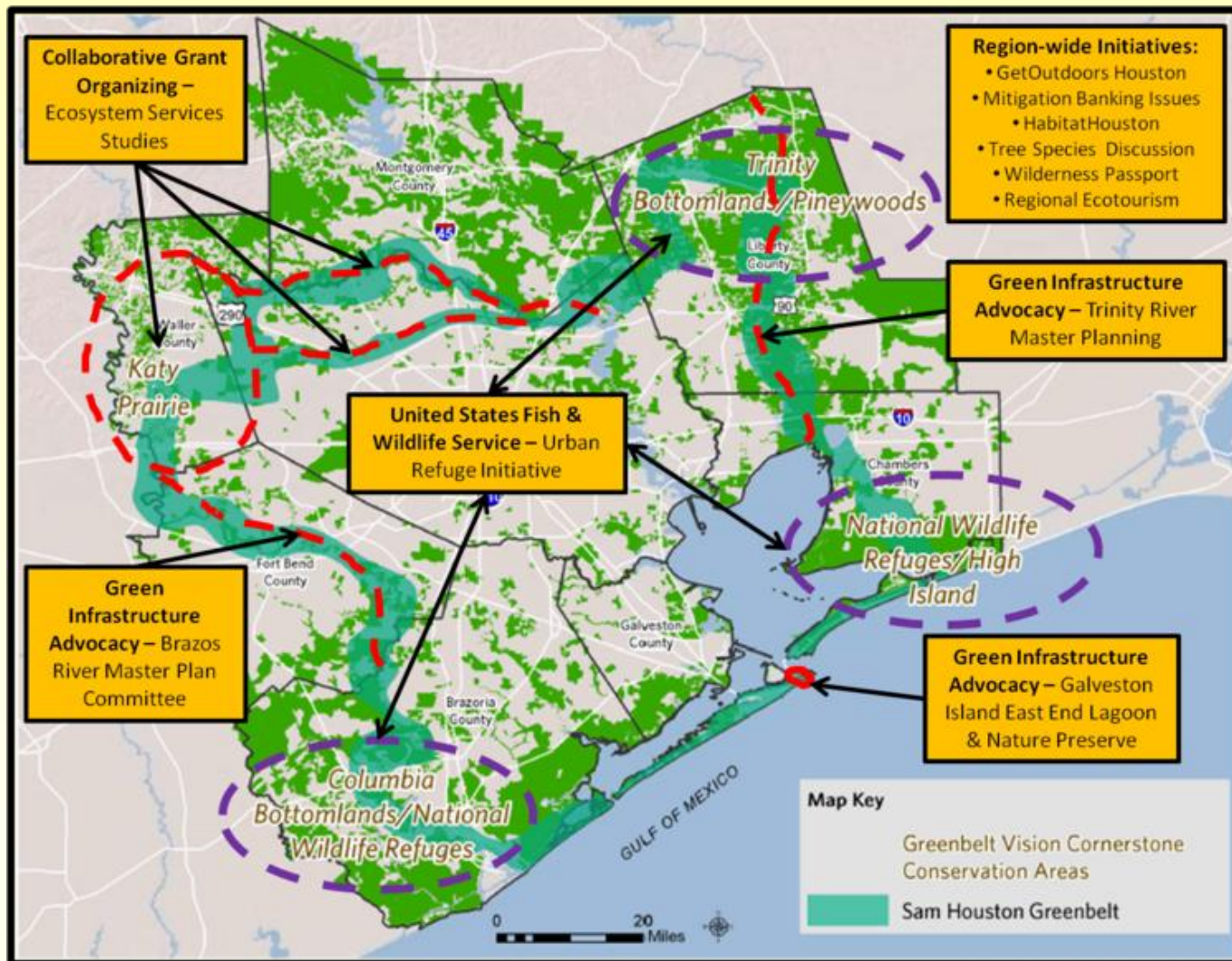
SOURCES: VDW&V, 2013; H-GAC, 2010; NADP Aerial, 2012.

VanDeWade
& Veeger
Incorporated

Maps – Timber Lane Parks Master Plan



Houston Wilderness

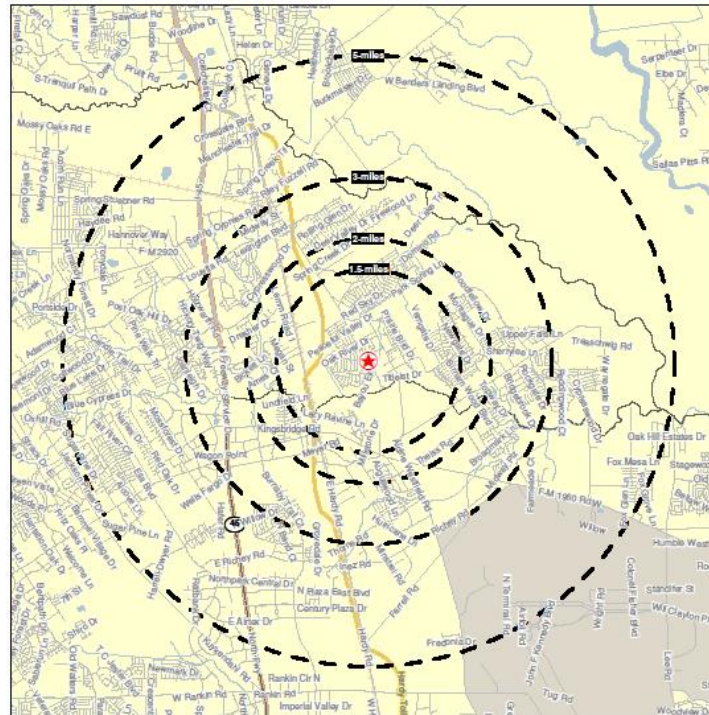


Demographics Index

- Demographics Map– page 22
- Demo – Race/Population/Income– page 23
- Demo – Race/Sex/Age -page 24
- Demo – Children/Employment/Income -page 25
- Demo – Household/Growth - page 26
- Demo – Cypress Creek Greenway User pg 27
- Demo – Cypress Creek Greenway Pop pg 28
- Demo – Cypress Creek Greenway Obes pg 29
- Demo – District Population Projections page 30

Demographics

■ SURVEY MAP



23118 Grand Rapids Ln
Spring TX 77373



Demographics- Race/Population/Income



DemoReports
1-866-557-2349
www.demoreports.com

5/22/2014

Prepared for:
Timber Lane Utility District

FULL DEMOGRAPHIC PROFILE

Coordinates
X: -95.5902
Y: 30.0442

	1.50 mile radius	2.00 mile radius	3.00 mile radius	5.00 mile radius
23118 Grand Rapids Spring TX 77373				
Square Miles Land Mass	7.06	12.56	28.26	78.49
Population & Growth				
2013 Total Population	23,762	38,964	75,042	171,360
2013 Population Density	3,364 psm	3,103 psm	2,656 psm	2,183 psm
2010-2013 Growth	1,862 8.9%	3,537 10.0%	6,120 12.1%	19,697 13.0%
2010-2013 Avg. Annual Growth	621 2.8%	1,179 3.3%	2,707 4.0%	6,558 4.3%
2018 Total Population	26,530	43,189	82,274	186,584
2018 Population Density	3,758 psm	3,430 psm	2,912 psm	2,377 psm
2013-2018 Proj. Pop. Growth	2,767 11.6%	4,220 10.8%	7,232 9.6%	15,221 8.9%
2013-2018 Avg. Annual Growth	553 2.3%	845 2.2%	1,446 1.8%	3,045 1.8%
2010 Total Population	21,901	35,427	66,921	151,662
2000 Total Population	16,848	26,399	42,833	91,118
1990 Total Population	15,368	22,694	36,066	78,243
Households & Growth				
2013 Households	7,938	12,900	25,146	58,448
2010-2013 Growth	614 8.4%	1,143 6.7%	2,592 11.5%	6,410 12.3%
2010-2013 Avg. Annual Growth	205 2.8%	381 3.2%	864 3.8%	2,137 4.1%
2018 Households	8,803	14,304	27,616	63,601
2013-2018 Growth	865 10.9%	1,406 10.9%	2,468 9.6%	5,358 9.2%
2013-2018 Avg. Annual Growth	185 2.3%	281 2.2%	484 2.0%	1,071 1.8%
2010 Households	7,322	11,757	22,555	52,035
Families				
2013 Families	6,091	9,955	18,966	43,292
2018 Families	6,795	11,024	20,760	47,617
Income				
2013 Aggregate HH Income	\$540.92 million	\$805.31 million	\$1,797.11 million	\$4,733.10 million
2013 Average Household Income	\$68,158	\$70,487	\$71,466	\$80,993
2013 Median Household Income	\$61,677	\$63,789	\$63,735	\$75,001
2013 Per Capita Income	\$22,903	\$24,609	\$24,039	\$26,985
2018 Aggregate HH Income	\$590.74 million	\$997.70 million	\$1,962.18 million	\$5,132.95 million
2018 Average Household Income	\$66,652	\$69,751	\$71,780	\$80,452
2018 Median Household Income	\$62,106	\$64,430	\$64,262	\$76,500
2018 Per Capita Income	\$22,406	\$23,377	\$24,150	\$26,830
Daytime Demographics				
Number of Employees	2,935	5,613	14,012	49,751
Number of Businesses	172	316	788	2,747
Avg. number Employees per Bus.	17.1	17.0	17.8	10.1
Residents per Business	138.2	123.3	95.2	62.4
Total Aggregate Annual Payroll	\$114.1 million	\$222.7 million	\$559.4 million	\$2,094.3 million

Page 1 of 5

DemoReports, 866-557-2349

Data Source: U.S. Census Bureau, G2013



DemoReports
1-866-557-2349
www.demoreports.com

5/22/2014

Prepared for:
Timber Lane Utility District

FULL DEMOGRAPHIC PROFILE

Coordinates
X: -95.5902
Y: 30.0442

	1.50 mile radius	2.00 mile radius	3.00 mile radius	5.00 mile radius
23118 Grand Rapids Spring TX 77373				
Population by Race				
2013 White Population	14,533 61.2%	23,656 60.7%	43,937 58.6%	98,061 57.2%
2013 Black Population	5,322 22.4%	8,637 22.2%	17,525 23.4%	42,482 24.8%
2013 Native American Population	74 0.3%	91 0.2%	142 0.2%	259 0.2%
2013 Asian Population	415 1.7%	771 2.0%	1,740 2.3%	4,995 2.9%
2013 Pacific Islander Population	47 0.2%	75 0.2%	113 0.2%	178 0.1%
2013 2 or more races	3,372 14.2%	5,735 14.7%	11,526 15.4%	25,346 14.8%
2018 White Population	15,803 59.0%	26,530 58.1%	46,990 57.1%	103,900 53.7%
2018 Black Population	6,174 23.3%	9,892 22.9%	19,662 23.9%	47,584 25.5%
2018 Native American Population	82 0.3%	101 0.2%	160 0.2%	333 0.2%
2018 Asian Population	485 1.8%	845 2.0%	1,858 2.3%	5,351 2.9%
2018 Pacific Islander Population	53 0.2%	80 0.2%	114 0.1%	179 0.1%
2018 2 or more races	3,953 14.9%	6,740 15.5%	13,498 16.4%	29,237 15.7%
Male Population by Race				
2013 White Males	7,202 61.2%	11,753 60.7%	21,706 56.0%	47,714 57.0%
2013 Black Males	2,882 22.8%	4,408 22.8%	8,881 24.7%	20,934 26.0%
2013 Native American Males	42 0.4%	54 0.3%	85 0.2%	155 0.2%
2013 Asian Males	200 1.7%	358 1.8%	764 2.2%	2,327 2.8%
2013 Pacific Islander Males	23 0.2%	36 0.2%	64 0.2%	102 0.1%
2013 2 or more races Males	1,624 13.6%	2,739 14.2%	5,368 14.5%	12,438 14.9%
2018 White Males	7,828 54.2%	12,681 43.8%	23,226 42.1%	50,702 41.5%
2018 Black Males	3,093 17.5%	5,014 17.3%	9,891 17.9%	23,367 19.1%
2018 Native American Males	45 0.3%	57 0.2%	89 0.2%	174 0.1%
2018 Asian Males	4,519 27.2%	7,974 27.5%	15,658 28.4%	33,501 27.4%
2018 Pacific Islander Males	26 0.1%	40 0.1%	61 0.1%	101 0.1%
2018 2 or more races Males	1,894 10.7%	3,215 11.1%	6,278 11.4%	14,271 11.7%
Female Population by Race				
2013 White Females	7,330 61.1%	11,902 60.7%	22,231 56.3%	50,347 57.4%
2013 Black Females	2,640 22.0%	4,229 21.6%	8,644 23.7%	21,548 24.6%
2013 Native American Females	32 0.3%	37 0.2%	57 0.1%	144 0.2%
2013 Asian Females	215 1.8%	413 2.1%	946 2.5%	2,669 3.0%
2013 Pacific Islander Females	23 0.2%	36 0.2%	48 0.1%	74 0.1%
2013 2 or more races Females	1,748 14.6%	2,996 15.3%	6,158 15.9%	12,908 14.7%
2018 White Females	7,975 59.4%	12,849 56.0%	23,764 56.7%	53,198 53.7%
2018 Black Females	3,081 23.0%	4,878 22.4%	9,765 23.3%	24,217 25.4%
2018 Native American Females	37 0.3%	44 0.2%	71 0.2%	159 0.2%
2018 Asian Females	241 1.8%	458 2.1%	1,010 2.4%	2,853 3.0%
2018 Pacific Islander Females	27 0.2%	41 0.2%	53 0.1%	78 0.1%
2018 2 or more races Females	2,059 15.3%	3,525 16.2%	7,220 17.2%	14,965 15.7%

Page 2 of 5

DemoReports, 866-557-2349

Data Source: U.S. Census Bureau, G2013

Demographics – Race/Sex/Age



DemoReports
1-866-557-2349
www.demoreports.com

5/22/2014

Prepared for:
Timber Lane Utility District

FULL DEMOGRAPHIC PROFILE

Coordinates
X: 95.3902
Y: 30.0442

23118 Grand Rapids Spring TX 77373	1.50 mile radius	2.00 mile radius	3.00 mile radius	5.00 mile radius
---------------------------------------	---------------------	---------------------	---------------------	---------------------

Hispanic Population

2013 Hispanic Population	8,060 33.9%	13,393 34.4%	26,640 35.5%	56,328 32.9%
2013 White not Hispanic Pop.	9,498 38.4%	16,019 40.9%	26,119 34.4%	58,772 34.9%
2013 Hispanic Males	3,998 49.2%	6,561 49.0%	12,879 48.3%	27,710 49.2%
2013 White not Hispanic Males	4,888 54.6%	7,432 46.2%	12,871 50.3%	28,423 50.6%
2013 Hispanic Females	4,092 50.8%	6,832 51.0%	13,769 51.7%	28,619 50.8%
2013 White not Hispanic Females	4,932 55.9%	7,586 46.7%	13,248 48.6%	30,349 50.3%
2018 Hispanic Population	9,781 36.9%	16,264 37.2%	32,330 38.3%	68,109 36.3%
2018 White not Hispanic Pop.	10,002 35.7%	15,895 40.0%	27,454 36.4%	62,124 35.8%
2018 Hispanic Males	4,819 49.3%	7,974 49.0%	15,658 48.4%	33,501 49.2%
2018 White not Hispanic Males	4,930 53.0%	7,804 46.9%	13,468 50.0%	29,981 50.1%
2018 Hispanic Females	4,962 50.7%	8,289 51.0%	16,072 51.6%	34,607 50.8%
2018 White not Hispanic Females	5,131 54.3%	8,031 48.5%	13,884 50.9%	32,143 50.4%

Population by Sex

2013 Male Population	11,774 48.5%	19,351 48.7%	36,897 49.2%	83,670 48.8%
2013 Female Population	11,999 50.5%	19,014 50.3%	36,144 50.8%	87,690 51.2%
2018 Male Population	13,110 49.4%	21,306 49.5%	40,304 49.1%	91,113 48.8%
2018 Female Population	13,420 50.6%	21,793 50.5%	41,880 50.9%	95,471 51.2%

Population by Sex by Age

2013 Male 0 to 9 years	2,141 9.0%	3,516 9.0%	6,791 9.1%	15,124 8.8%
2013 Male 10 to 19 years	1,953 8.2%	3,182 8.2%	5,341 7.9%	13,319 7.8%
2013 Male 20 to 29 years	1,729 7.3%	2,808 7.2%	5,190 6.9%	11,584 6.6%
2013 Male 30 to 39 years	1,470 6.2%	2,420 6.2%	4,687 6.2%	10,575 6.2%
2013 Male 40 to 49 years	1,554 6.5%	2,544 6.3%	4,812 6.4%	11,106 5.8%
2013 Male 50 to 59 years	1,409 5.9%	2,281 5.3%	4,273 5.7%	9,725 5.7%
2013 Male 60 to 69 years	951 4.0%	1,505 4.1%	3,005 4.0%	6,650 4.0%
2013 Male 70 to 79 years	427 1.8%	738 1.3%	1,467 2.0%	3,532 2.1%
2013 Male 80 to 84 years	69 0.3%	133 0.3%	310 0.4%	888 0.5%
2013 Male 85+ years	71 0.3%	140 0.4%	391 0.5%	1,207 0.7%
2013 Female 0 to 9 years	2,150 9.2%	3,563 9.1%	7,021 9.4%	15,651 9.3%
2013 Female 10 to 19 years	1,989 8.4%	3,226 8.3%	6,141 8.2%	13,959 8.1%
2013 Female 20 to 29 years	1,781 7.4%	2,846 7.3%	5,366 7.4%	11,910 7.0%
2013 Female 30 to 39 years	1,497 6.3%	2,456 6.3%	4,846 6.5%	11,093 6.5%
2013 Female 40 to 49 years	1,593 6.7%	2,578 6.0%	4,875 6.0%	11,640 6.3%
2013 Female 50 to 59 years	1,435 6.0%	2,312 5.3%	4,418 5.9%	10,152 5.9%
2013 Female 60 to 69 years	988 4.1%	1,607 4.1%	3,138 4.2%	7,179 4.2%
2013 Female 70 to 79 years	434 1.8%	748 1.3%	1,517 2.0%	3,702 2.2%
2013 Female 80 to 85 years	70 0.3%	135 0.3%	321 0.4%	910 0.5%
2013 Female 85+ years	72 0.3%	142 0.4%	404 0.5%	1,285 0.7%

Page 3 of 8

DemoReports, 866-557-2349

Data Source: U.S. Census Bureau, Geolytics



DemoReports
1-866-557-2349
www.demoreports.com

5/22/2014

Prepared for:
Timber Lane Utility District

FULL DEMOGRAPHIC PROFILE

Coordinates
X: 95.3902
Y: 30.0442

23118 Grand Rapids Spring TX 77373	1.50 mile radius	2.00 mile radius	3.00 mile radius	5.00 mile radius
---------------------------------------	---------------------	---------------------	---------------------	---------------------

2013 Population by Age

2013 Median Age	38	38	40	42
2013 Pop. 0 to 4 years	2,100 9.2%	3,580 9.2%	6,998 9.3%	16,637 9.1%
2013 Pop. 5 to 9 years	2,128 9.0%	3,490 9.0%	6,816 9.1%	16,339 9.0%
2013 Pop. 10 to 14 years	1,860 8.3%	3,204 8.2%	6,131 8.2%	13,837 8.1%
2013 Pop. 15 to 19 years	1,962 8.3%	3,204 8.2%	5,951 7.9%	13,340 7.8%
2013 Pop. 20 to 24 years	1,952 7.8%	3,013 7.7%	5,070 7.4%	12,220 7.1%
2013 Pop. 25 to 29 years	1,836 6.9%	2,641 6.9%	4,965 6.9%	11,054 6.5%
2013 Pop. 30 to 34 years	1,493 6.3%	2,438 6.3%	4,743 6.3%	10,686 6.2%
2013 Pop. 35 to 39 years	1,175 6.2%	2,112 6.2%	4,789 6.4%	10,971 6.4%
2013 Pop. 40 to 44 years	1,536 6.5%	2,524 6.8%	4,887 6.9%	11,378 6.6%
2013 Pop. 45 to 49 years	1,600 6.7%	2,599 6.7%	4,900 6.9%	11,370 6.6%
2013 Pop. 50 to 54 years	1,510 6.4%	2,435 6.3%	4,585 6.1%	10,541 6.2%
2013 Pop. 55 to 59 years	1,334 5.8%	2,158 5.6%	4,096 5.6%	9,375 5.5%
2013 Pop. 60 to 64 years	1,107 4.7%	1,824 4.7%	3,501 4.7%	7,898 4.6%
2013 Pop. 65 to 69 years	811 3.4%	1,369 3.5%	2,671 3.6%	6,130 3.6%
2013 Pop. 70 to 74 years	550 2.3%	941 2.4%	1,850 2.5%	4,352 2.5%
2013 Pop. 75 to 79 years	311 1.3%	545 1.4%	1,135 1.5%	2,883 1.7%
2013 Pop. 80 to 84 years	139 0.6%	268 0.7%	631 0.8%	1,778 1.0%
2013 Pop. 85+	143 0.6%	263 0.7%	795 1.1%	2,472 1.4%

2018 Population by Age

2018 Median Age	38	38	40	42
2018 Pop. 0 to 4 years	2,416 9.1%	3,945 9.1%	7,548 9.2%	16,735 9.0%
2018 Pop. 5 to 9 years	2,305 8.7%	3,760 8.7%	7,250 8.8%	16,189 8.7%
2018 Pop. 10 to 14 years	2,211 8.3%	3,501 8.3%	6,911 8.4%	15,514 8.3%
2018 Pop. 15 to 19 years	2,117 8.0%	3,419 7.9%	6,458 7.8%	14,523 7.8%
2018 Pop. 20 to 24 years	2,011 7.6%	3,257 7.5%	6,045 7.3%	13,499 7.2%
2018 Pop. 25 to 29 years	1,879 7.1%	3,036 7.2%	5,638 6.9%	12,472 6.7%
2018 Pop. 30 to 34 years	1,714 6.5%	2,767 6.4%	5,201 6.3%	11,560 6.2%
2018 Pop. 35 to 39 years	1,597 6.1%	2,590 6.1%	5,003 6.2%	11,254 6.1%
2018 Pop. 40 to 44 years	1,573 5.9%	2,582 6.0%	4,982 6.1%	11,357 6.1%
2018 Pop. 45 to 49 years	1,819 6.1%	2,625 6.1%	4,996 6.1%	11,518 6.2%
2018 Pop. 50 to 54 years	1,587 6.0%	2,561 5.9%	4,824 5.9%	11,174 6.0%
2018 Pop. 55 to 59 years	1,484 5.5%	2,357 5.5%	4,425 5.4%	10,215 5.5%
2018 Pop. 60 to 64 years	1,266 4.9%	2,072 4.8%	3,906 4.7%	8,930 4.8%
2018 Pop. 65 to 69 years	1,033 3.9%	1,691 3.8%	3,202 3.9%	7,221 3.9%
2018 Pop. 70 to 74 years	741 2.9%	1,233 2.9%	2,367 2.9%	5,449 2.9%
2018 Pop. 75 to 79 years	482 1.8%	811 1.9%	1,563 1.9%	3,703 2.0%
2018 Pop. 80 to 84 years	239 0.9%	420 1.0%	869 1.1%	2,228 1.2%
2018 Pop. 85+	253 1.0%	481 1.1%	1,076 1.3%	3,024 1.0%

Page 4 of 8

DemoReports, 866-557-2349

Data Source: U.S. Census Bureau, Geolytics

Demographics – Children/Employment/Income



DemoReports
1-866-557-2349
www.demoreports.com

5/22/2014

Prepared for:
Timber Lane Utility District

FULL DEMOGRAPHIC PROFILE

Coordinates
X: 95.3902
Y: 30.0442

23118 Grand Rapids Spring, TX 77373	1.50 mile radius	2.00 mile radius	3.00 mile radius	5.00 mile radius
--	---------------------	---------------------	---------------------	---------------------

Children

2013 Pop. 0 to 5 (Infant+K)	2,515	4,288	8,363	18,708
2013 Pop. 6 to 17 (Gradeschool)	4,459	7,260	13,955	31,545
2018 Pop. 0 to 5 (Infant+K)	2,870	4,700	9,000	19,574
2018 6 to 17 (Gradeschool)	4,901	7,987	15,293	34,259

Educational Attainment

2013 Population 25+	12,738	19,455	32,697	70,693
No Education	82 0.6%	127 0.7%	205 0.6%	480 0.7%
Elementary	300 2.4%	450 2.3%	898 2.7%	1,899 2.7%
Some High School No Diploma	1,072 8.4%	1,641 8.4%	2,802 8.6%	5,812 8.2%
High School Graduate or Equiv.	4,059 32.1%	6,130 31.5%	9,538 29.2%	18,125 25.7%
Some College	4,226 33.7%	6,419 33.2%	10,521 32.2%	21,055 29.8%
Associate Degree	845 6.6%	1,369 7.0%	2,344 7.2%	5,020 7.1%
Bachelor Degree	1,532 12.5%	2,500 12.9%	4,784 14.6%	13,451 19.1%
Master Degree	331 2.6%	582 3.0%	1,151 3.5%	3,357 4.8%
Professional Degree	94 0.7%	173 0.9%	311 1%	965 1%
Doctorate Degree	33 0.3%	52 0.3%	139 0.4%	464 0.7%

Employment & Drive Time

2000 Total Workers 18+	8,974	13,472	25,012	48,605
Worked at Home	159 1.9%	274 2.0%	444 1.9%	1,015 2.1%
Did not Work at Home	8,805 98.1%	13,198 98.0%	22,568 98.1%	47,589 97.9%
under 5 minutes	67 0.8%	114 0.9%	226 1.0%	747 1.6%
5 - 9 minutes	452 5.1%	671 5.1%	1,359 5.4%	2,857 5.9%
10 - 14 minutes	843 9.4%	1,075 8.1%	2,010 8.0%	4,704 9.8%
15 - 19 minutes	1,492 16.8%	2,259 17.1%	3,789 16.8%	7,559 15.8%
20 - 24 minutes	1,541 17.5%	2,243 17.0%	3,617 16.0%	7,328 15.3%
25 - 29 minutes	516 5.9%	806 6.1%	1,470 6.5%	3,053 6.4%
30 - 34 minutes	1,355 15.5%	2,035 15.4%	3,521 15.6%	7,574 15.8%
35 - 39 minutes	333 3.8%	480 3.7%	892 4.0%	1,882 3.9%
40 - 44 minutes	563 6.4%	796 6.0%	1,216 5.4%	2,522 5.3%
45 - 59 minutes	1,125 12.8%	1,677 12.7%	2,714 12.0%	5,815 12.2%
60 - 69 minutes	613 7.0%	820 6.3%	1,401 6.2%	2,979 6.2%
70+ minutes	106 1.2%	204 1.5%	386 1.7%	929 1.9%

Transportation to Work

Car, Truck, or Van	8,505 98.8%	12,734 96.9%	21,697 96.9%	45,707 96.8%
Drive Alone	7,587 89.2%	11,210 86.0%	19,100 86.0%	40,478 86.0%
Carpooled	953 11.2%	1,504 11.3%	2,597 11.3%	5,229 10.9%
Public Transportation	223 2.5%	336 2.5%	580 2.6%	1,292 2.7%
Other	59 0.7%	78 0.6%	105 0.5%	241 0.5%

Page 5 of 8

DemoReports, 866-557-2349

Data Source: U.S. Census Bureau, Geoplus



DemoReports
1-866-557-2349
www.demoreports.com

5/22/2014

Prepared for:
Timber Lane Utility District

FULL DEMOGRAPHIC PROFILE

Coordinates
X: 95.3902
Y: 30.0442

23118 Grand Rapids Spring, TX 77373	1.50 mile radius	2.00 mile radius	3.00 mile radius	5.00 mile radius
--	---------------------	---------------------	---------------------	---------------------

2013 Households by Income

2013 Under \$10,000	277 3.5%	501 3.3%	1,070 4.3%	2,623 4.5%
2013 \$10,000 - \$15,000	382 4.9%	545 3.6%	948 3.8%	1,876 3.2%
2013 \$15,000 - \$20,000	224 2.8%	372 2.5%	626 3.7%	2,581 4.4%
2013 \$20,000 - \$25,000	422 5.3%	649 4.3%	1,121 4.5%	2,479 4.2%
2013 \$25,000 - \$30,000	374 4.7%	604 4.0%	1,154 4.7%	2,662 4.6%
2013 \$30,000 - \$35,000	252 3.2%	385 2.6%	658 3.4%	2,353 4.0%
2013 \$35,000 - \$40,000	495 6.2%	723 4.8%	1,248 5.0%	2,593 4.4%
2013 \$40,000 - \$45,000	394 5.0%	619 4.0%	1,355 5.4%	3,241 5.7%
2013 \$45,000 - \$50,000	430 5.4%	629 4.3%	1,350 5.4%	3,129 5.3%
2013 \$50,000 - \$60,000	506 6.4%	830 5.5%	2,017 8.0%	5,229 9.1%
2013 \$60,000 - \$75,000	1,287 16.2%	2,092 16.2%	3,823 15.2%	7,603 13.4%
2013 \$75,000 - \$100,000	1,411 18.2%	2,391 16.5%	4,359 17.2%	9,328 16.0%
2013 \$100,000 - \$125,000	808 10.4%	1,482 10.3%	2,615 10.4%	5,584 9.7%
2013 \$125,000 - \$150,000	230 3.0%	457 3.3%	1,140 4.6%	2,951 5.1%
2013 \$150,000 - \$200,000	189 2.4%	329 2.3%	723 2.9%	2,465 4.2%
2013 \$200,000+	110 1.4%	194 1.5%	387 1.5%	1,560 2.7%

2018 Households by Income

2018 Under \$10,000	312 3.9%	560 3.9%	1,208 4.4%	2,564 4.6%
2018 \$10,000 - \$15,000	438 4.9%	610 4.3%	1,077 3.9%	2,108 3.3%
2018 \$15,000 - \$20,000	251 2.8%	421 2.9%	1,061 3.9%	2,554 4.0%
2018 \$20,000 - \$25,000	472 5.3%	727 5.1%	1,264 4.6%	2,807 4.4%
2018 \$25,000 - \$30,000	428 4.9%	685 4.9%	1,338 4.9%	2,954 4.6%
2018 \$30,000 - \$35,000	293 3.3%	432 3.0%	965 3.9%	2,613 4.1%
2018 \$35,000 - \$40,000	551 6.2%	802 5.9%	1,378 5.0%	2,670 4.9%
2018 \$40,000 - \$45,000	448 5.1%	699 4.9%	1,506 5.5%	3,632 5.8%
2018 \$45,000 - \$50,000	495 5.6%	704 4.9%	1,491 5.4%	3,597 5.9%
2018 \$50,000 - \$60,000	558 6.3%	1,022 7.1%	2,200 8.0%	5,808 9.1%
2018 \$60,000 - \$75,000	1,435 16.2%	2,318 16.2%	4,175 15.7%	8,455 13.3%
2018 \$75,000 - \$100,000	1,807 18.1%	2,644 18.5%	4,793 17.1%	10,031 15.7%
2018 \$100,000 - \$125,000	1,005 11.3%	1,617 11.3%	2,890 10.2%	6,740 9.9%
2018 \$125,000 - \$150,000	260 2.9%	497 3.5%	1,230 4.5%	3,157 4.9%
2018 \$150,000 - \$200,000	207 2.3%	353 2.5%	703 2.8%	2,554 4.1%
2018 \$200,000+	123 1.4%	215 1.5%	417 1.5%	1,636 2.6%

Page 6 of 8

DemoReports, 866-557-2349

Data Source: U.S. Census Bureau, Geoplus

Demographics – Household/Growth



DemoReports
1-866-557-2349
www.demoreports.com

5/22/2014

Prepared for:
Timber Lane Utility District

FULL DEMOGRAPHIC PROFILE

Coordinates
X: 95.3902
Y: 30.0442

23118 Grand Rapids Spring, TX 77373	1.50 mile radius	2.00 mile radius	3.00 mile radius	5.00 mile radius
--	---------------------	---------------------	---------------------	---------------------

2013 Household Structure

Average HH Size	3.0	3.0	3.0	3.0
1-person HH	1,407 8.5%	2,255 8.5%	4,826 9.4%	12,012 10.2%
2-person HH	6,529 39.6%	10,645 39.9%	20,320 39.5%	46,434 39.4%
2+ person family	8,091 36.9%	9,955 37.3%	16,596 36.9%	43,252 36.7%
Families Married	4,059	6,825	13,042	30,309
Families Married w/children	2,150	3,589	6,920	16,059
Families Married no children	1,900	3,256	6,122	14,250
Families Other	2,032 12.3%	3,131 11.7%	5,924 11.5%	12,982 11.0%
Fam. Oth. Single Male Head	468	764	1,517	3,274
Fam. Oth. Single Male Head w/ch.	293	434	858	1,792
Fam. Oth. Single Male Head no ch.	204	331	659	1,482
Fam. Oth. Single Female Head	1,546	2,366	4,407	9,705
Fam. Oth. Single Fem. Head w/ch.	909	1,407	2,770	6,095
Fam. Oth. Single Fem. Head no ch.	577	899	1,637	3,612
Non-Family HH	438 2.7%	690 2.6%	1,354 2.8%	3,142 2.7%

2018 Household Structure

Average HH Size	3.0	3.0	3.0	3.0
1-person HH	1,575 8.5%	2,510 8.5%	5,351 9.5%	13,313 10.3%
2-person HH	7,259 39.5%	11,794 39.8%	22,264 39.4%	50,469 39.2%
2+ person family	6,785 38.9%	11,024 37.2%	20,760 38.9%	47,017 36.5%
Families Married	4,512	7,525	14,181	32,643
Families Married w/children	2,337	3,939	7,542	17,351
Families Married no children	2,175	3,586	6,639	15,292
Families Other	2,283 12.4%	3,490 11.8%	6,579 11.7%	14,374 11.2%
Fam. Oth. Single Male Head	547	855	1,686	3,611
Fam. Oth. Single Male Head w/ch.	317	483	950	1,976
Fam. Oth. Single Male Head no ch.	230	372	736	1,636
Fam. Oth. Single Female Head	1,736	2,645	4,893	10,783
Fam. Oth. Single Fem. Head w/ch.	1,094	1,646	3,092	6,792
Fam. Oth. Single Fem. Head no ch.	642	999	1,801	3,991
Non-Family HH	493 2.7%	770 2.6%	1,504 2.7%	3,472 2.7%

This report was generated using data from the 2013 Census Bureau's American Community Survey (ACS) 5-year estimates. The data is based on the 2013 Census Bureau's ACS 5-year estimates. The data is based on the 2013 Census Bureau's ACS 5-year estimates.

Page 7 of 8

DemoReports, 866-557-2349

Data Source: U.S. Census Bureau, Geography



DemoReports
1-866-557-2349
www.demoreports.com

5/22/2014

Prepared for:
Timber Lane Utility District

FULL DEMOGRAPHIC PROFILE

Coordinates
X: 95.3902
Y: 30.0442

23118 Grand Rapids Spring, TX 77373	1.50 mile radius	2.00 mile radius	3.00 mile radius	5.00 mile radius
--	---------------------	---------------------	---------------------	---------------------

2013 Householders by Age

15-24 years	297 0.7%	496 0.8%	1,283 0.7%	3,172 0.4%
25-34 years	1,838 24.9%	2,901 29.5%	5,753 29.5%	13,425 29.0%
35-44 years	1,937 24.1%	3,201 24.8%	6,250 24.8%	14,406 24.7%
45-54 years	1,704 21.5%	2,799 21.7%	5,410 21.5%	12,653 21.6%
55-59 years	870 8.5%	1,104 8.6%	2,059 8.2%	4,648 8.3%
60-64 years	810 7.7%	962 7.5%	1,753 7.0%	3,917 6.7%
65-74 years	629 7.9%	892 7.7%	1,760 7.0%	4,606 6.9%
75-84 years	187 2.4%	349 2.7%	678 2.7%	1,500 2.7%
85+ years	58 0.7%	97 0.8%	181 0.8%	437 0.7%

Housing

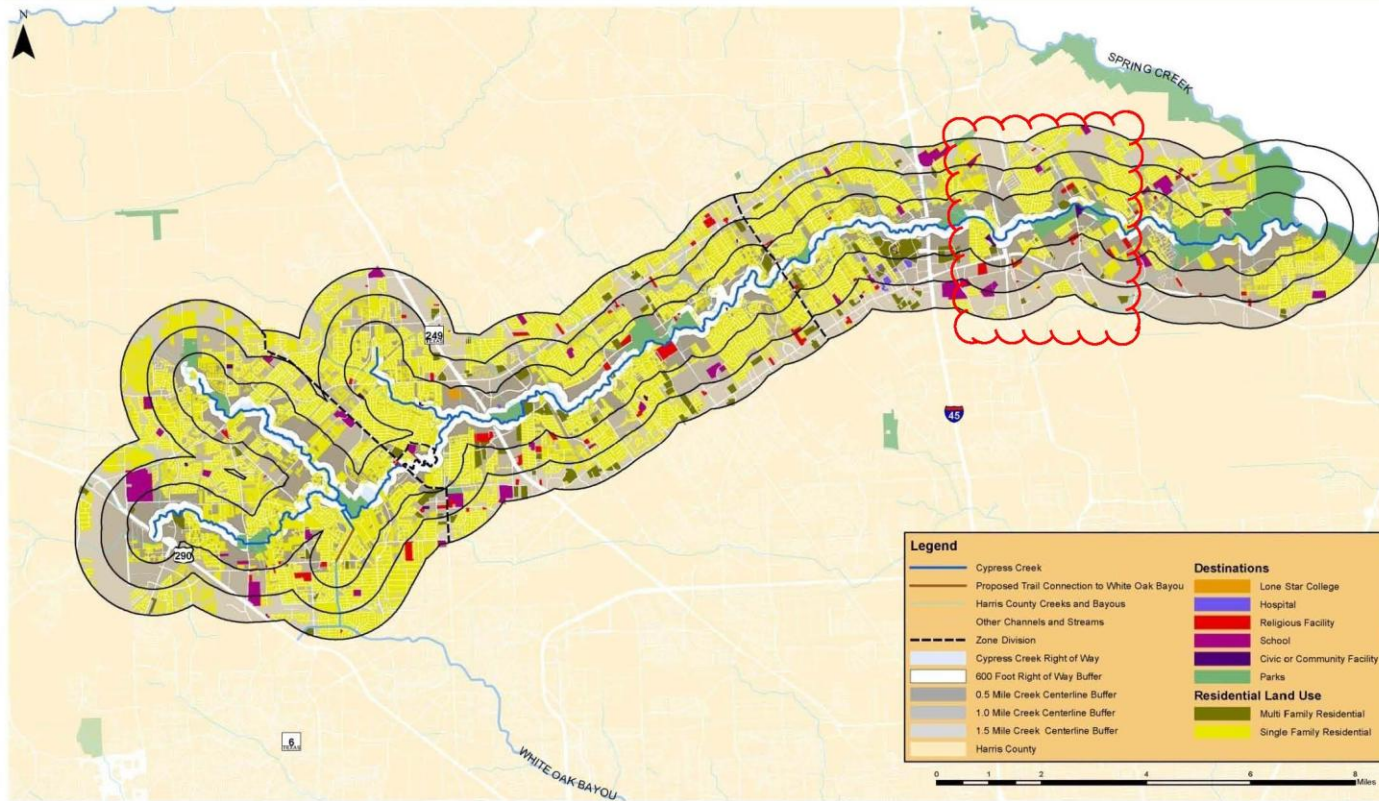
Median year Built	1980	1979	1980	1981
2000 Median Value	\$80,406	\$80,345	\$86,706	\$92,173
2013 Total Housing Units	8,860	14,280	27,828	63,583
2013 Owner Occupied	5,679 64.0%	9,308 65.1%	16,822 60.5%	37,287 58.8%
2013 Renter Occupied	2,606 29.4%	3,947 27.5%	6,467 23.4%	20,549 32.1%
2013 Vacant Housing Units	584 6.6%	1,034 7.2%	2,539 9.1%	6,147 9.6%
2018 Total Housing Units	9,838	15,885	30,899	71,355
2018 Owner Occupied	6,264 63.9%	10,323 65.0%	18,684 60.1%	41,467 58.1%
2018 Renter Occupied	2,908 29.6%	4,412 27.8%	9,480 30.7%	23,011 32.2%
2018 Vacant Housing Units	666	1,150	2,835	6,877
2000 Total Housing Units	5,331	9,020	16,223	36,025
2000 Owner Occupied	4,397 82.5%	6,105 67.6%	9,520 58.7%	19,672 54.6%
2000 Renter Occupied	1,837 34.3%	2,838 31.4%	5,997 36.9%	14,439 40.1%
2000 Total Vacant	196 3.7%	285 3.2%	716 4.4%	1,923 5.3%
2000 Median Contract Rent	\$633	\$609	\$641	\$630
2000 Gross Rent as % of HH Inc.	24.6	24.7	23.9	25.0

Page 8 of 8

DemoReports, 866-557-2349

Data Source: U.S. Census Bureau, Geography

Cypress Creek User Map



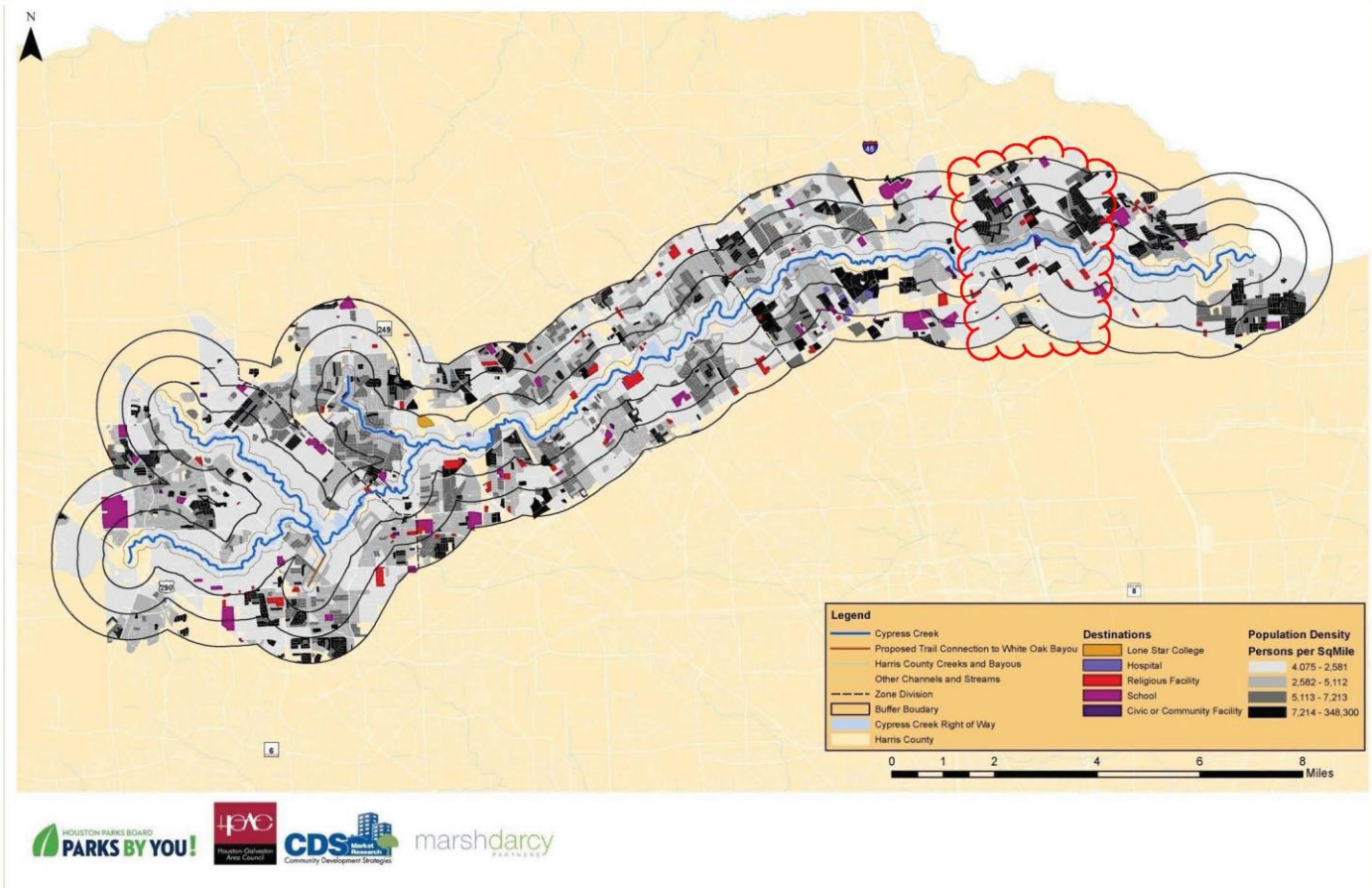
HOUSTON PARKS BOARD
PARKS BY YOU!

TPAC
Houston Planning Area Council

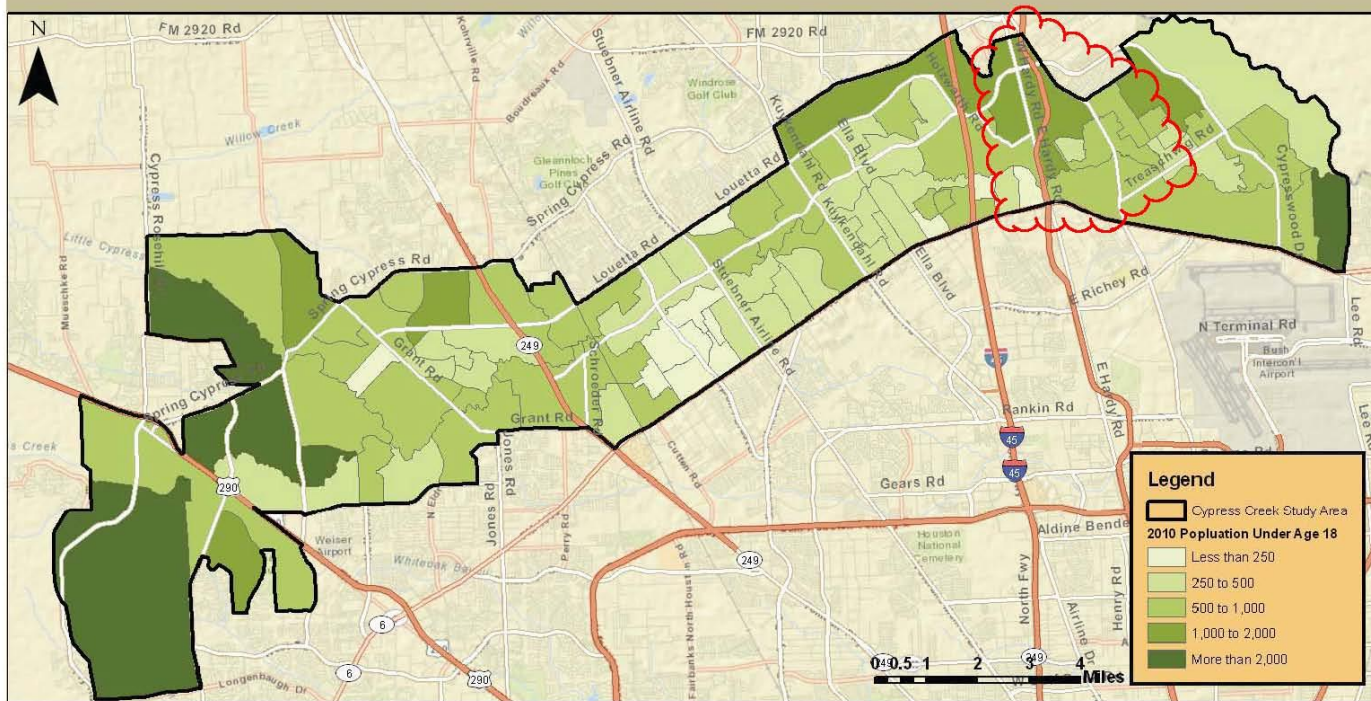
CDS
Community Development Strategies

marshdarcy
PARTNERS

Population Density



Let's Dig in on Childhood Obesity



2010 Population 18 and Under

Demographics-

District Population Projections

2014-2024		TLUD 10 YEAR PLAN - POPULATION PROJECTIONS							
YEAR	PROJECTED POPULATION	CONNECTIONS IN THE DISTRICT			ASSESSSED EVALUATION				CONSTRUCTED SEC
		ACTIVE	UNDER CONST	TOTAL					
2014	18,550	5300	240	5540	\$ 404,000,000.00	2013			TIMBERLANE SEC 1-12
2015	19,390	5540	240	5780	\$ 440,000,000.00	2014			CYPRESS TRAILS SEC 1-2
2016	20,230	5780	240	6020	\$ 476,000,000.00	2015			SANDPIPER SEC 1
2017	21,070	6020	240	6260	\$ 512,000,000.00	2016			SANDPIPER VILLAGE SEC
2018	21,910	6260	240	6500	\$ 548,000,000.00	2017			SPRING CROSSING SEC 1
2019	22,750	6500	240	6740	\$ 584,000,000.00	2018			CYPRESS TERRACE SEC
2020	23,590	6740	240	6980	\$ 620,000,000.00	2019			PARK SPRING SEC 1-2
2021	24,430	6980	240	7220	\$ 656,000,000.00	2020			HIGHLAND GLEN SEC 1
2022	25,270	7220	240	7460	\$ 692,000,000.00	2021			WESTFIELD BRIDGE APA
2023	26,110	7460	240	7700	\$ 728,000,000.00	2022			WINDSONG VILLAGE APA
2024	26,950	7700	240	7940	\$ 764,000,000.00	2023			TRAILING VINE APARTME
ULTIMATE	34,650	9900							TIMBER RUN APARTMENT:
									SPRING TRACE SENIOR LI
CURRENTLY PLATTED 2107 ACRES									WERRINGTON SEC 1
									MAPLE TERRACE SEC1
									TIMBER LANE QUADRAPL
									UNDER CONSTRUCT
									PARK SPRING SEC 5-6
									MAPLE TERRACE SEC 2
									WERRINGTON PARK SEC :
									CYPRESS TERRACE SEC :
									ARBOR TRAILS SEC 1
									PLANNED CONSTRU
									HIGHLAND GLEN SEC 2
									LEE TRACT
									ARBOR TRAILS SEC 2 + R
									ACREAGE LEFT = 640

Inventory of Existing Facilities

				AMENITIES 2014																												
AREA	PARK	OWNER	DEVELOPED	BALL FIELD	CANOE LAUNCH	COMMUNITY BLDG	FISHING	NATURE OBSERVATION	PAVILLION	BBQ GRILLS	PLAYGROUND	RESTROOMS	SKATE PARK	SOCCER FIELD	TENNIS COURT	POOL	HIKING TRAILS	HIKE AND BIKE TRAILS	MOUNTAIN BIKE TRAILS	JOGGING TRACK	EXERCISE TRACK	PICNIC STATIONS	PARKING	SKATEBOARD PARK	DISC GOLF COURSE	SPLASH PAD	PUMP TRACK	DOG PARK	SENIOR CENTER	ACCESS BRIDGE	NEW TRAIL HEAD	
HIGHLAND GLEN NORTH HILLS	BAYER PARK	HC PCT 4	YES	X						X												X		X								
	HERMAN LITTLE PARK	TLUD	YES		X	X	X	X	X	X	X	X	X				X	X		X	X	X	X	X			O					
	HERMAN LITTLE PARK FUT	TLUD	NO		X																										O	
	HG COMMUNITY PARK	HG CIA	YES							X												X										
TIMBER LANE	TIMBER LANE PARK	TLUD	YES	X	X				X	X	X		X					X	X	X		X	X			O						
	LIBERTY PARK/SCPP	TLUD	YES		X			X	X	X	X		X							X	X	X	X									
	HIRSCH ELEMENTARY	SISD	YES							X																						
	TL CIA	TLCIA	YES		X			X			X				X	X						X	X									
SANDPIPER	SANDPIPER PARK	TLUD	YES			X			X	X							X	X	X			X	X									
	SANDPIPER PARK-FUTURE	TLUD	NO		O				O		O		O																		O	
PARK SPRING	PS COMMUNITY PARK	PS CIA	YES					X		X												X	X									
	CYPRESS CREEK PARK	TLUD	YES			X	X	X	X	X		X					X	X	X	O	O	X		X		O	O	X	O	O	O	
	CYPRESS CREEK PARK	TLUD	IN-PROCESS								IP		IP										O									
CYPRESS TRAILS	CT CIA	CTCIA	YES		X										X	X							X									
SPRING CROSSING																																
	SC CIA	SCCIA	YES																	O												
ARBOR TRAILS	MERCER ARBORETUM	HC PCT 4	YES		O	X		X	X	X	X	X					X					X	X									
ARBOR TRAILS SEC2																																
CYPRESS TERRACE	CT CIA	CTCIA	YES							X			X							O												
WERRINGTON PARK	TIP PROJECT	TLUD	IN-PROCESS														IP	IP				IP								IP	IP	
		BUILDER	IN-PROCESS								IP		IP							IP												
		TLUD	NO								O																O					
WERRINGTON	W CIA	W CIA	YES		X				X						X							X	X									
TOTAL IN-PROCESS 2014-15 COMPLETION				0	0	0	0	0	0	0	2	0	2	0	0	1	1	0	1	0	1	0	0	0	0	0	0	0	0	1	1	1
TOTALS TLUD				1	1	2	3	2	3	5	4	4	2	3	0	0	3	3	3	3	2	5	4	2	1	0	0	1	0	0	0	0
TOTALS CIA/COUNTY				0	1	4	0	0	2	0	3	1	0	1	2	3	0	0	0	0	0	4	5	0	0	0	0	0	0	0	0	0
TOTALS ALL				1	2	6	3	3	6	7	9	7	2	6	2	3	4	4	3	4	2	10	11	2	1	0	0	1	0	0	0	

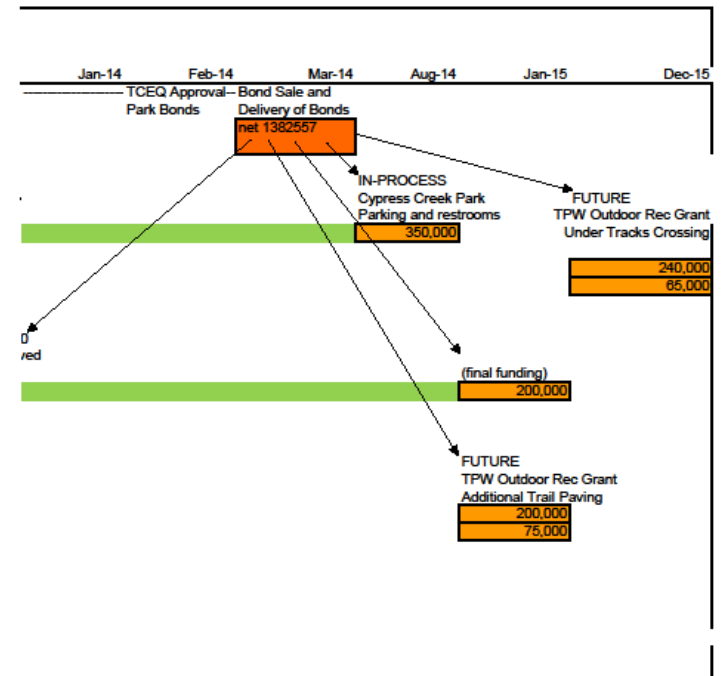
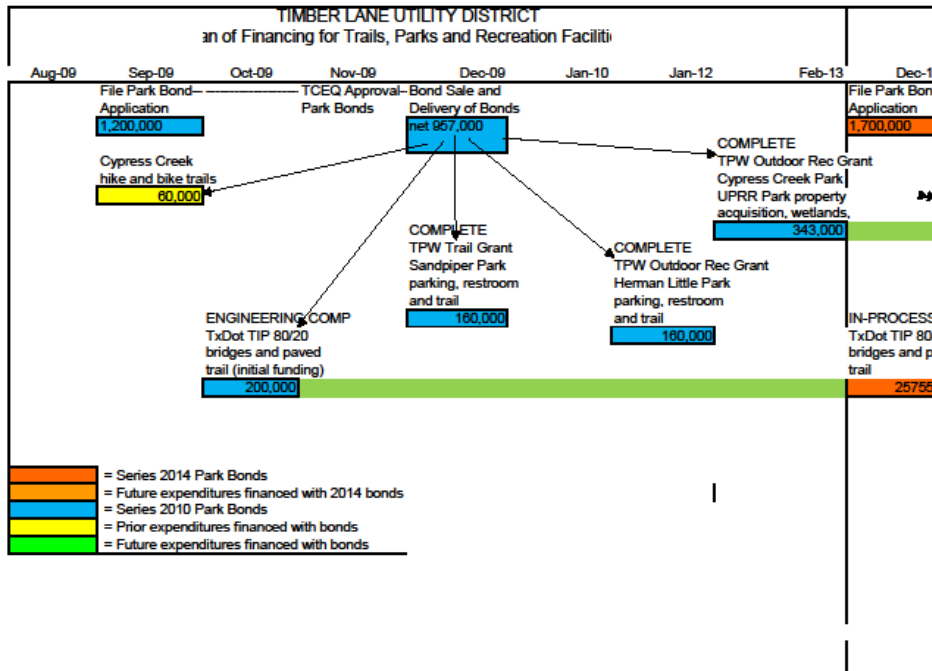
KEY
 X = EXISTING FACILITIES
 O = FUTURE FACILITIES
 IP = IN-PROCESS 2014-15 FACILITIES

6/10/2014

Timber Lane Utility District
 Ultimate Master Plan 2014

31

Park Bond Spider Chart



Master Plan Links

■ LINKS

- **TIMBER LANE UTILITY DISTRICT – WEB SITE**
<http://www.timberlaneud.com/parks>
- **TRAIL CORRIDOR MASTER PLAN**
<http://www.timberlaneud.com/upload/files/>
- **SANDPIPER PARK MASTER PLAN**
http://www.timberlaneud.com/upload/files/2_Sandpiper-Park%202006.pdf
- **CYPRESS CREEK PARK MASTER PLAN - SITE ANALYSIS**
<http://www.timberlaneud.com/upload/files/>
- **CYPRESS CREEK PARK MASTER PLAN - MASTER PLAN –BRET ELDER**
<http://www.timberlaneud.com/upload/files/>
- **HERMAN LITTLE PARK MASTER**
<http://www.timberlaneud.com/upload/files/>
- **TRAILS EXTENSION MASTER PLAN**
<http://www.timberlaneud.com/upload/files/>
- **PARK RULES**
<http://www.timberlaneud.com/upload/files/>